



ONLYX

Black Glass Collection



Cover design explores mixing painting with printing on textured glass then back lighting to create the illusion of a window which adds depth to the room while adding an unexpected design element to the shower experience.

Welcome to a new era in architectural surfaces. ADG proudly introduces the ONYX Collection, crafted with Europe's most advanced back paint coating for glass, now being offered to the U.S. flat glass market for the first time.

With over 30 years of development and global recognition, this proprietary moisture-resistant acrylic epoxy resin is engineered for both interior and exterior use, in wet or dry environments. Backed by a 10-year warranty, it delivers flawless color, exceptional adhesion, and enduring beauty. This collection channels the mystique of ancient stone into sleek, modern surfaces transforming walls into statements of power, elegance, and depth.

Black Onyx isn't just a color, it's a mood. A force. This collection draws from the storied past of the gemstone, once worn by warriors, revered by mystics, and feared for its intensity. Now, reimagined in high-performance glass, it becomes a canvas for bold interiors that demand presence.

Whether in a shower that feels like a private sanctuary, a backsplash that anchors a chef's domain, or a wine cellar that whispers sophistication, Black Onyx glass delivers more than aesthetics, it delivers atmosphere.

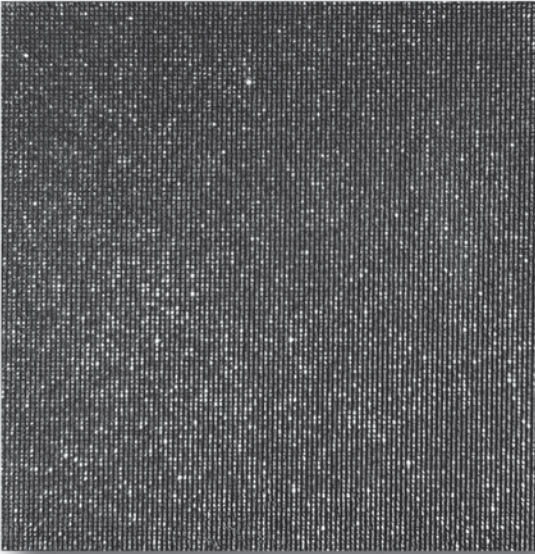
This ONYX collection is for the confident designer, the bold homeowner, the visionary architect. The synthetic photographs within this presentation were created using Midjourney with prompts written by me and finished in Photoshop as 3D renders.

I invite you to get inspired, to explore the possibilities of back painted glass and to create something truly special with it, then let's work together to make it a reality.



Connie Horner
CEO | Product Designer
1.813.765.0045

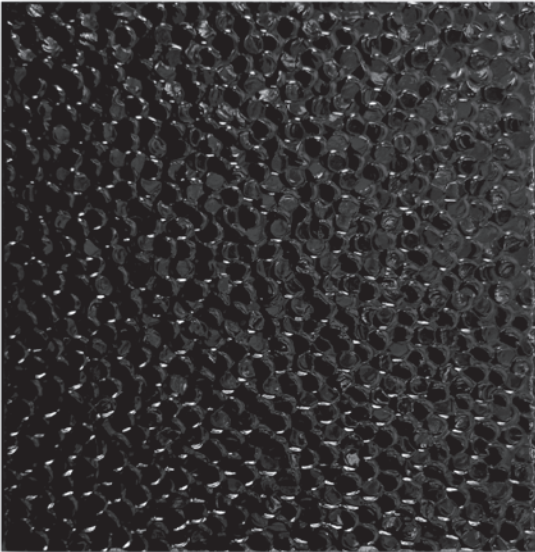




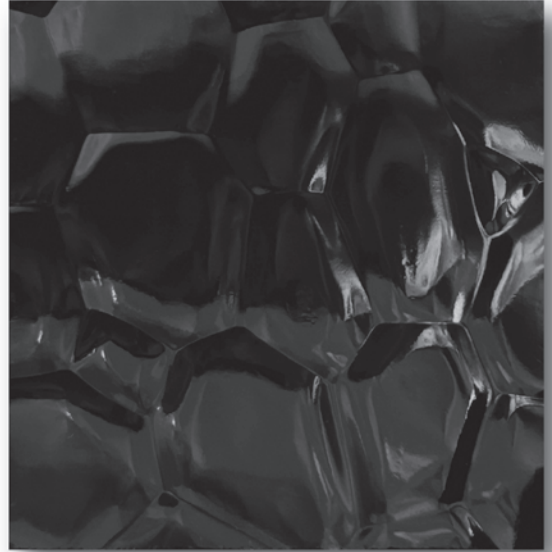
Model N°. 28110-C
5/32" (4mm) - Panel Size: 72" x 96"



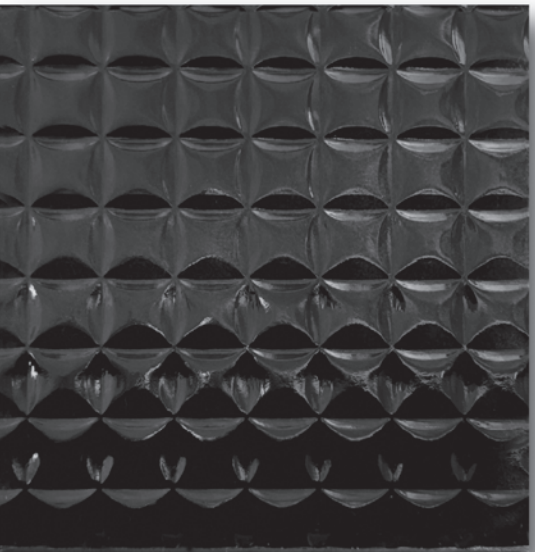
Model N°. 28106-C
5/32" (4mm) - Panel Size: 72" x 96"



Model N°. 28101-C
5/32" (4mm) - Panel Size: 72" x 84"



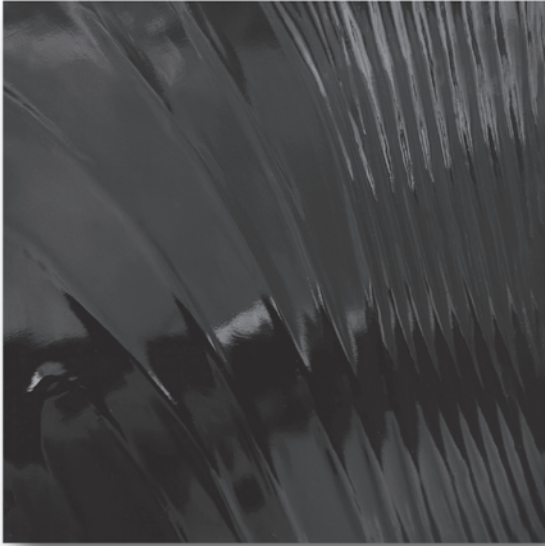
Model N°. 2842-C
5/32" (4mm) - Panel Size: 52" x 84"



Model N°. 28132-C
3/16" (5mm) - Panel Size: 72" x 96"



Model N°. 28124-C
5/32" (4mm) - Panel Size: 88" x 126"



Model N°. 28122-C
3/16" (5mm) - Panel Size: 72" x 96"



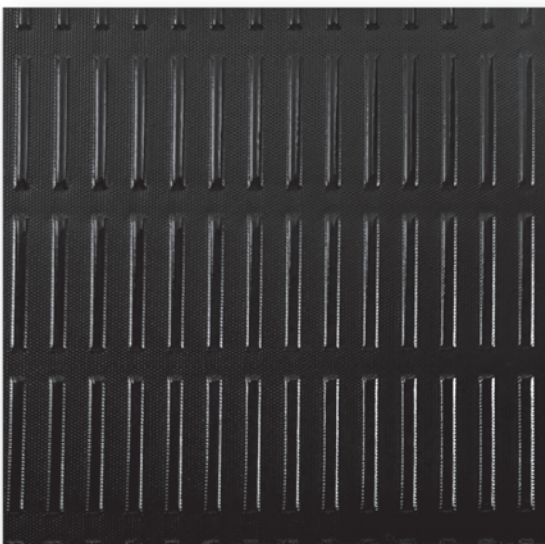
Model N°. 2840-C
5/32" (4mm) - Panel Size: 52" x 84"



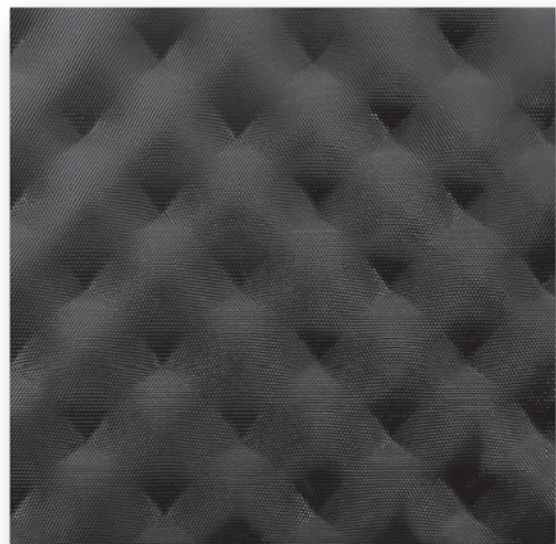
Model N°. 2819-C
5/32" (4mm) - Panel Size: 87" x 87"



Model N°. 2802-C
5/32" (4mm) - Panel Size: 72" x 96"



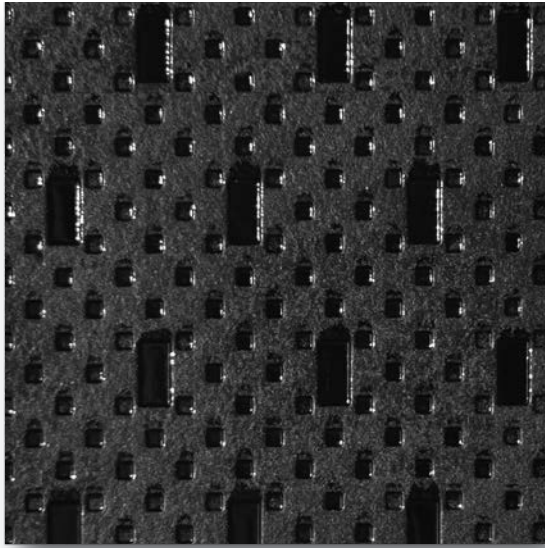
Model N°. 2877-C
5/32" (4mm) - Panel Size: 80" x 99"



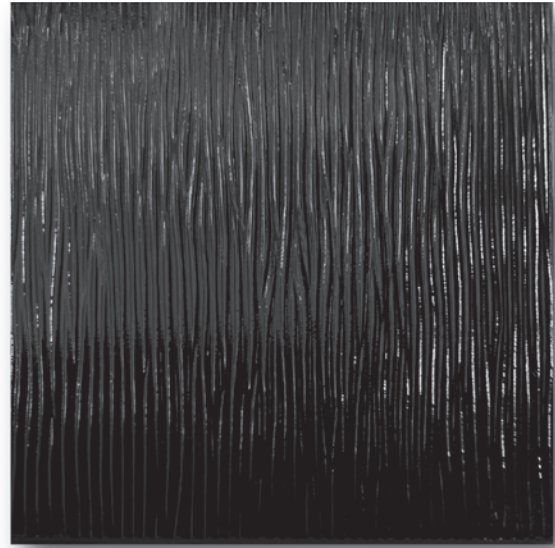
Model N°. 2883-C
5/32" (4mm) - Panel Size: 79" x 126"







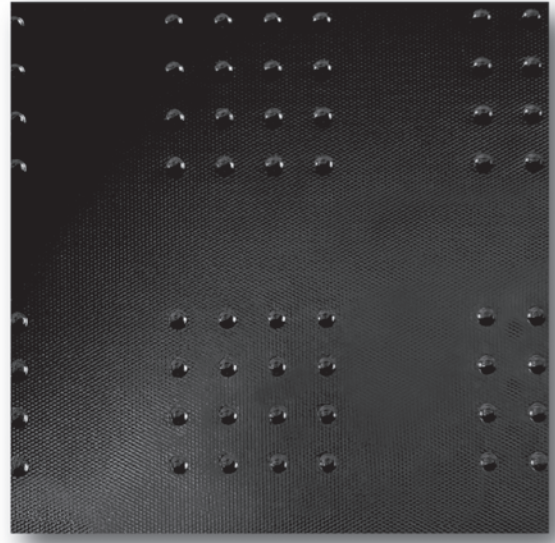
Model N°. 2849-C
5/32" (4mm) - Panel Size: 63" x 84"



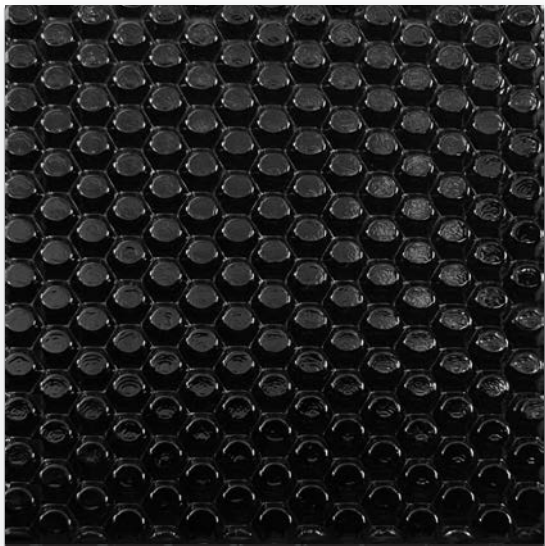
Model N°. 28126-C
3/16" (5mm) - Panel Size: 72" x 96"



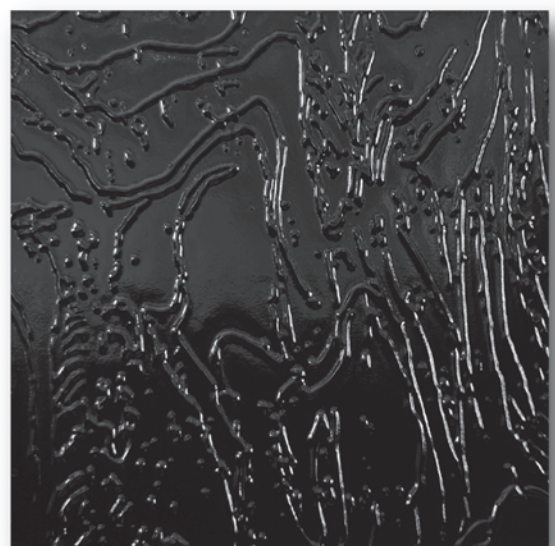
Model N°. 2889-C
5/32" (4mm) - Panel Size: 60" x 84"



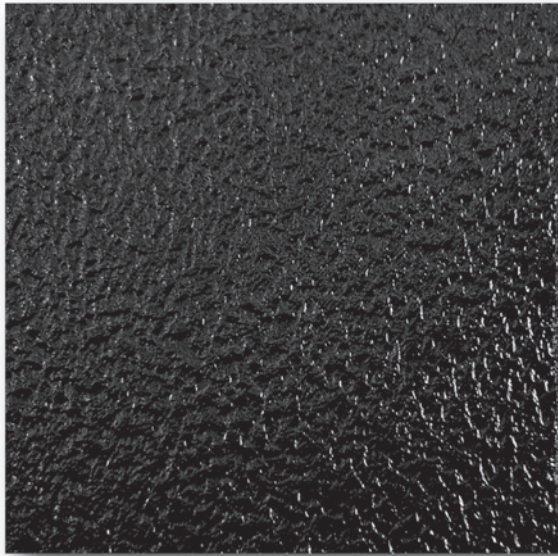
Model N°. 2879-C
5/32" (4mm) - Panel Size: 72" x 126"



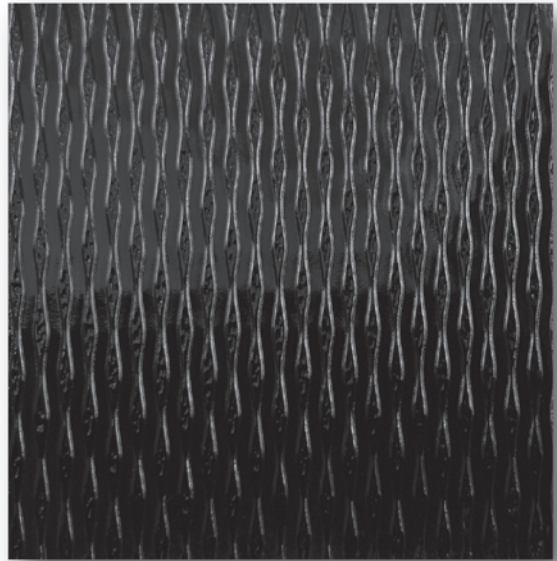
Model N°. 2813-C
1/4" (6mm) - Panel Size: 78.7" x 96"



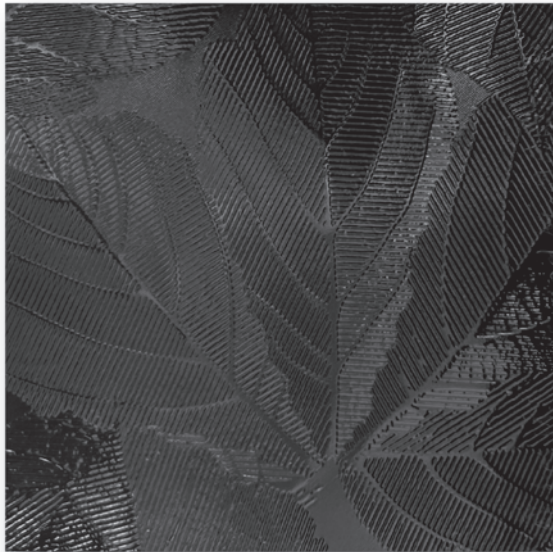
Model N°. 28109-C
5/32" (4mm) - Panel Size: 52" x 84"



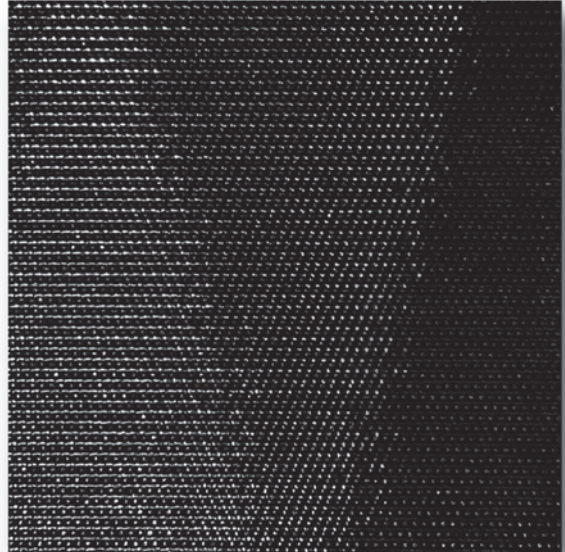
Model N°. 28133-C
5/32" (4mm) - Panel Size: 72" x 96"



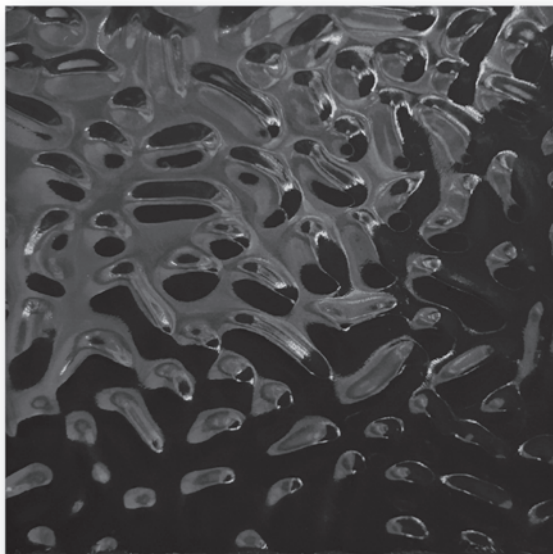
Model N°. 28121-C
5/32" (4mm) - Panel Size: 72" x 84"



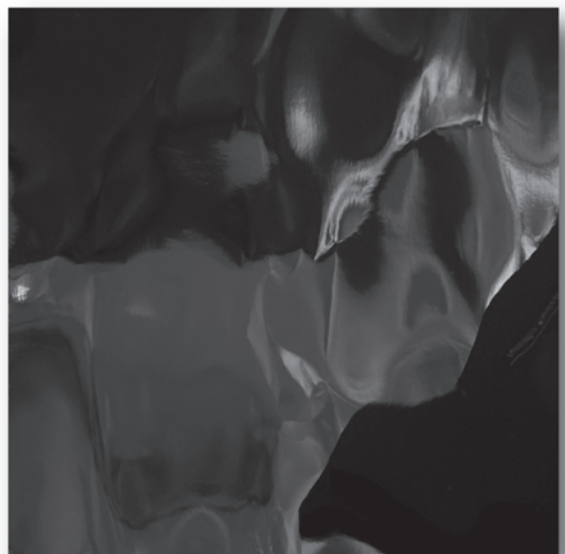
Model N°. 2847-C
5/32" (4mm) - Panel Size: 52" x 84"



Model N°. 2878-C
5/32" (4mm) - Panel Size: 80" x 99"



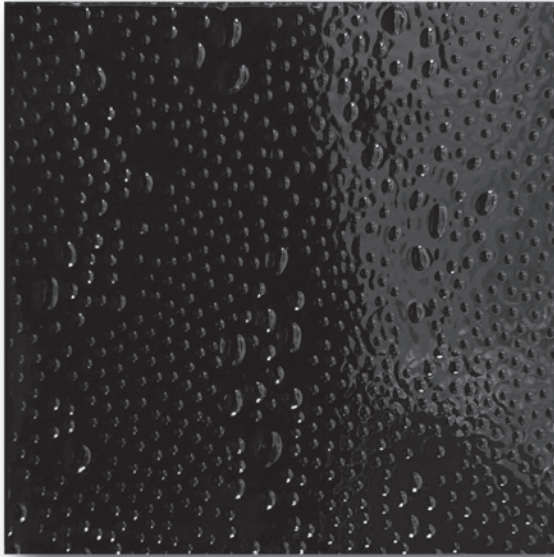
Model N°. 2827-C
5/32" (4mm) - Panel Size: 72" x 96"



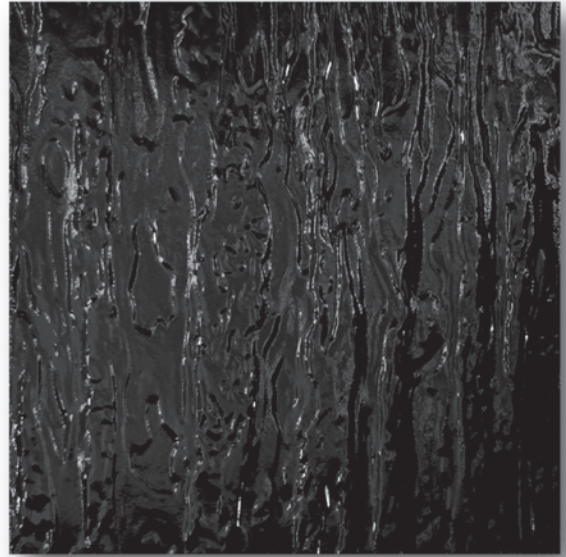
Model N°. 2856-C
5/32" (4mm) - Panel Size: 60" x 86"



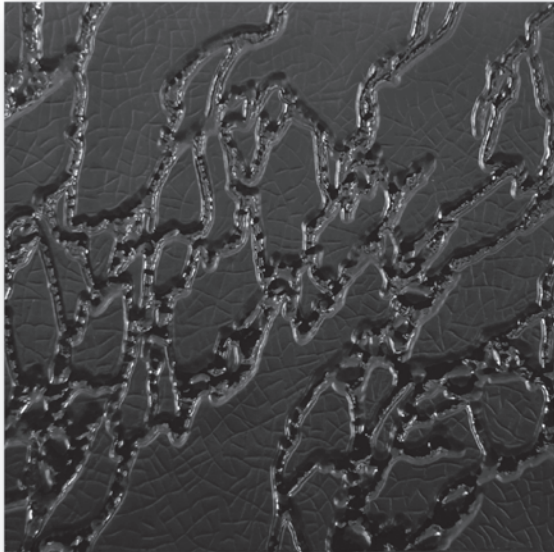




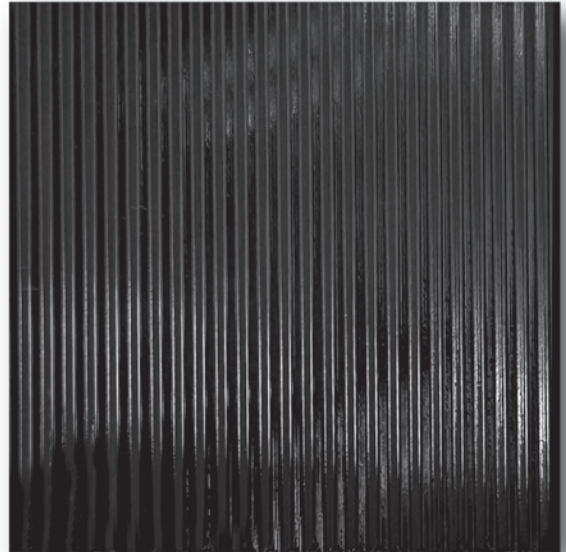
Model N°. 28135-C
1/4" (6mm) - Panel Size: 72" x 84"



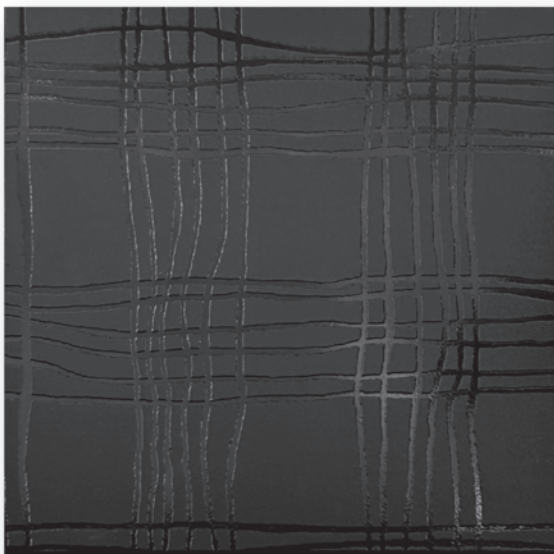
Model N°. 28102-C
5/32"(4mm) - Panel Size: 72" x 96"



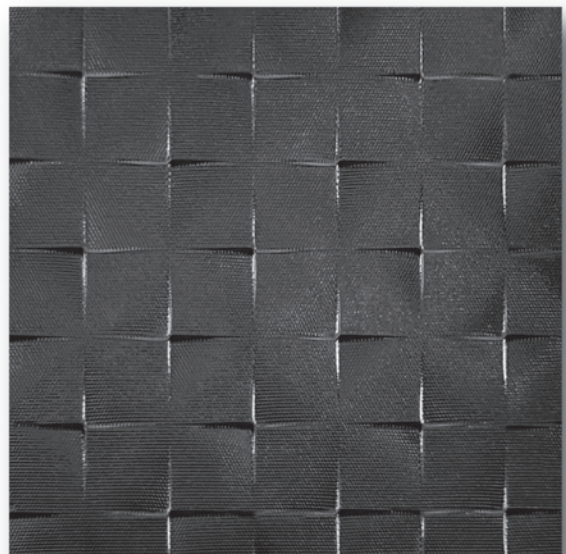
Model N°. 2824-C
5/32" (4mm) - Panel Size: 59" x 79"



Model N°. 2829-C
3/16" (5mm) - Panel Size: 72" x 96"



Model N°. 28130-C
5/32"(4mm) - Panel Size: 89" x 126"



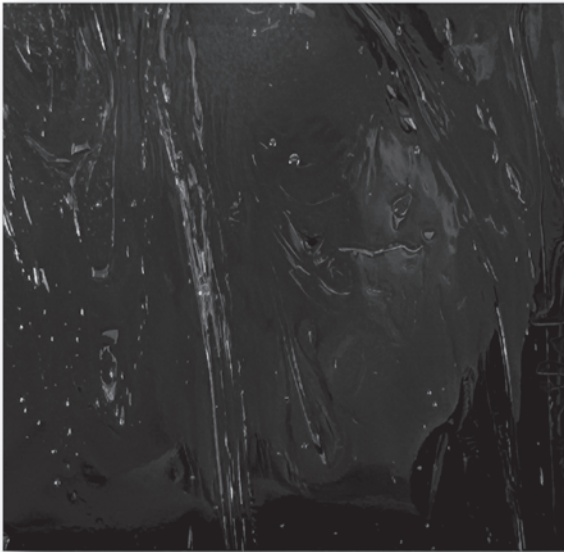
Model N°. 2881-C
5/32" (4mm) - Panel Size: 78" x 126"



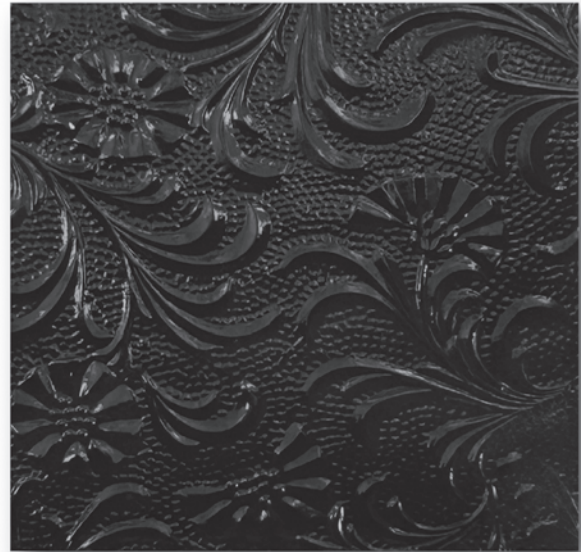
Model N°. 28134-C
5/32" (4mm) - Panel Size: 60" x 84"



Model N°. 2822-C
5/32" (4mm) - Panel Size: 52" x 84"



Model N°. 28125-C
5/32" (4mm) - Panel Size: 65" x 85"



Model N°. 2844-C
5/32" (4mm) - Panel Size: 72" x 96"



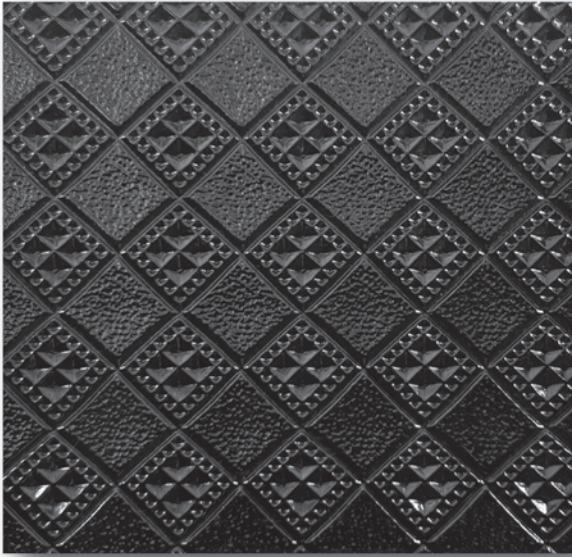
Model N°. 2880-C
5/32" (4mm) - Panel Size: 80" x 99"



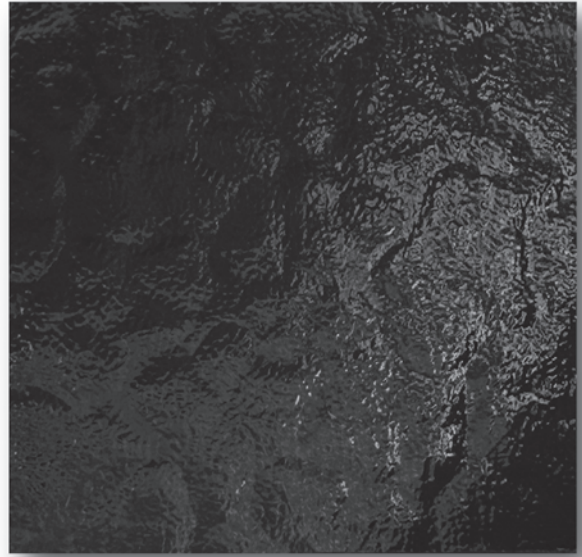
Model N°. 2812-C
5/32" (4mm) - Panel Size: 72" x 96"



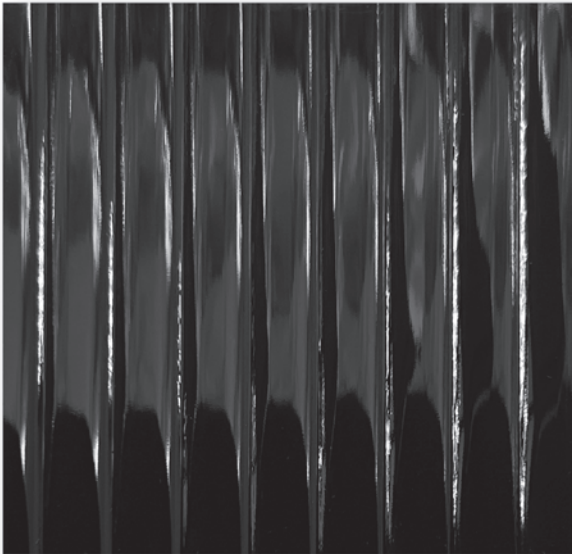




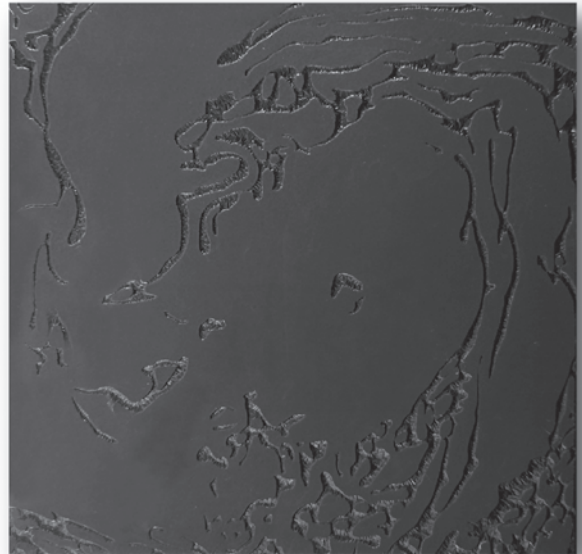
Model N°. 28111-C
5/32" (4mm) - Panel Size: 72" x 96"



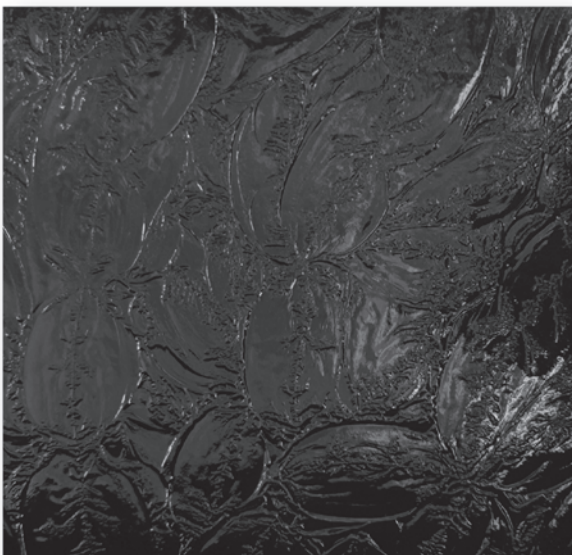
Model N°. 2805-C
5/32" (4mm) - Panel Size: 52" x 84"



Model N°. 28105-C
5/32" (4mm) - Panel Size: 72" x 96"



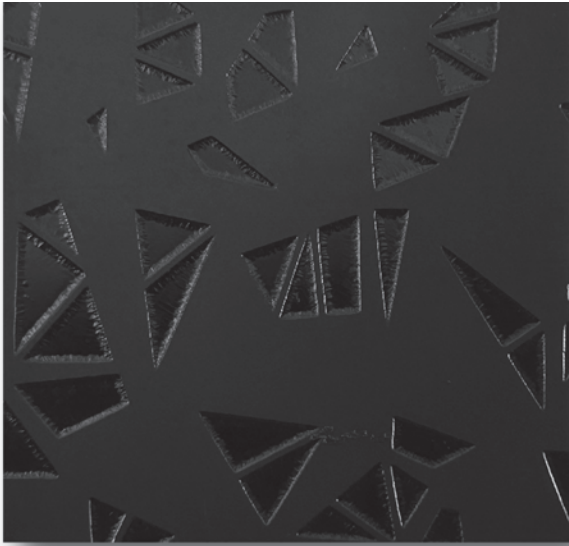
Model N°. 28154-C
5/32" (4mm) - Panel Size: 63" x 79"



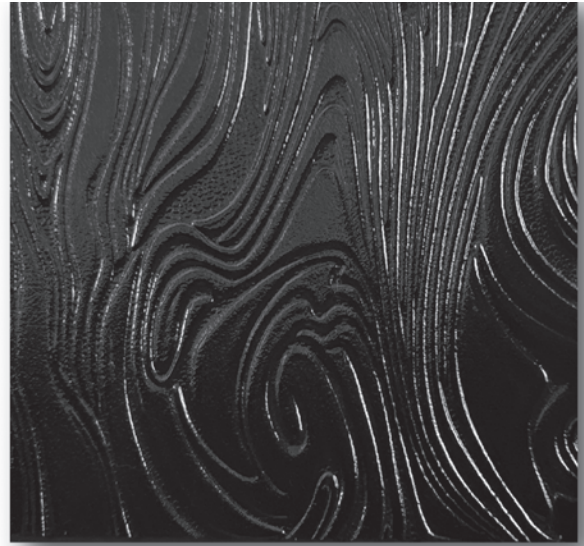
Model N°. 2826-C
1/4" (6mm) - Panel Size: 60" x 96"



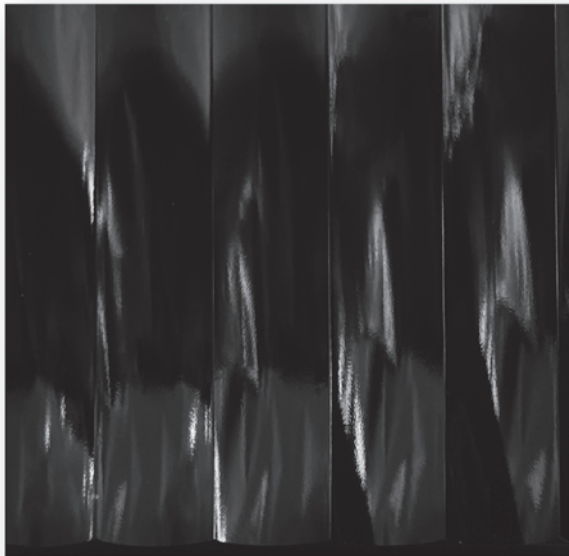
Model N°. 2882-C
5/32" (4mm) - Panel Size: 80" x 99"



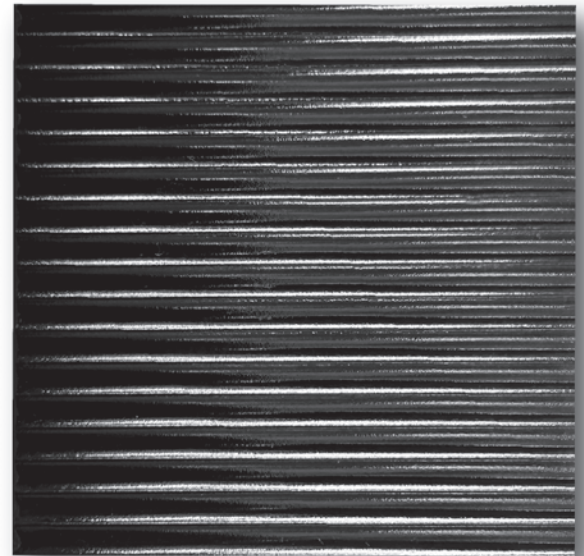
Model N°. 28129-C
5/32" (4mm) - Panel Size: 63" x 79"



Model N°. 28117-C
5/32" (4mm) - Panel Size: 52" x 84"



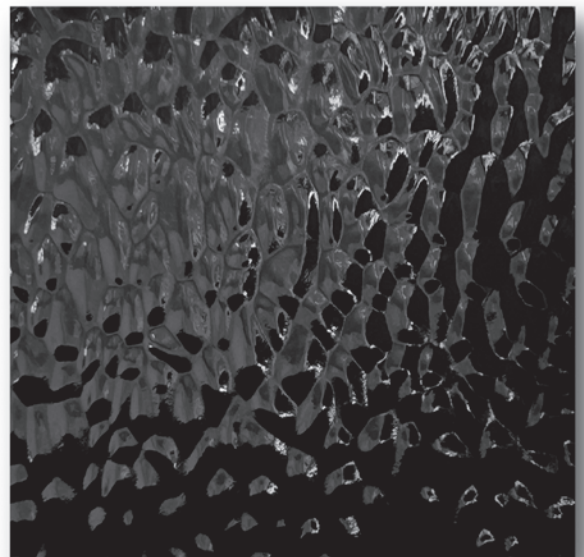
Model N°. 2852-C
5/32" (4mm) - Panel Size: 60" x 86"



Model N°. 28107-M
1/4" (6mm) - Panel Size: 96" x 79"



Model N°. 28119-C
5/32" (4mm) - Panel Size: 79" x 126"



Model N°. 2834-C
3/16" (5mm) - Panel Size: 72" x 96"





THE BACK PAINT

SNOILS

After three decades of proven performance across Europe and South America, ADG proudly brings this world-renowned back paint coating to the American architectural & design industries for the first time. Engineered for both interior and exterior glass applications, including shower walls, backsplashes, spandrel panels, and all types of wall covering applications, this proprietary formula delivers unmatched durability in wet or dry environments. Its advanced adhesion, color stability, and moisture resistance make it a superior alternative to domestic legacy finishes. Backed by a 10-year manufacturer's warranty, this coating redefines what's possible in sustainable architecture, combining design freedom with long-term reliability. ADG is proud to introduce a finish that's trusted globally but not readily available in the U.S. until now. With precision color-matching to Pantone®, RAL®, Benjamin Moore®, Sherwin-Williams®, and others, your vision stays uncompromised with continuous wall color.

It is unrivaled, unmatched, unapologetically, back painted glass.

	Domestic	Imported
Mirror Finish		X
Custom Color Matching	X	X
Transparent, Translucent and Opaque Colors	X	X
Interior Applications	X	X
Exterior Applications		X
Residential, Commercial and Industrial Applications	X	X
Wet High Humidity Applications	X	X
Air Space required for installation		
Direct to Wall installation	X	X
Must be set-off the base to prevent contact with water	X	
Acrylic and Epoxy Resins		X
Excellent Surface Adhesion		X
Excellent Color Retention		X
Low VOC	X	X
Weatherproof Properties		X
Scratch Resistancy		X
Chemical Resistancy		X
Water Repellent		X
Alkali Resistant		X
Requires low modulus, neutral silicone for installation	X	X
Heat Resistant		X
Direct Sunlight Applications UV Stable		X
Domestic Product	X	
Imported Product		X
Warranty in Years Interior Only No Wet/Humid App	10	
Warranty in Years Int & Ext Wet / Humid App		10

The hard-surface market is booming. From glazed porcelain tile to natural stone to fabricated shower panels, billions are being spent on materials that are waterproof, decorative, and easily installable. But here's the truth: none of them offer the whole package the way decorative glass does.

ADG's new back-painted glass finishes are engineered for ease, elegance, and profit. Unlike tile, there's no grout to maintain. Unlike stone, there's no sealing, no staining, no fragility. And unlike plastic panels, there's no compromise on luxury. This is design-forward, high-performance glass, ready to disrupt legacy materials and redefine what walls can be.

The Profit Advantage

Glass installs faster. Cleaner. With fewer trades. That means more margin, less mess, and a dramatically smoother path to project completion. ADG empowers fabricators, designers, and builders to claim more of the profit without sacrificing aesthetic impact or customization.

Market Momentum

- Porcelain Tile: \$16.12B in 2025 | \$30.31B by 2032 (CAGR 9.44%)
- Natural Stone: \$38.1B in 2023 | \$53.5B by 2032 (CAGR 3.87%)
- Fabricated Wall Panels: \$2.5B in 2023 | \$4.8B by 2032 (CAGR 7.1%)
- Decorative Flat Glass: \$5.1B by 2030 (CAGR 6.0%)

These numbers prove the demand. But they also reveal a gap: decorative glass is underrepresented, undervalued, and ripe for category creation. ADG is here to fill that gap, with finishes that elevate showers, backsplashes, foyers, and walls of all types into one of a kind design experiences.

	Tile	Stone	Fabricated	Glass
Finished Product	X	X	X	X
Easy Customization	X		X	X
Custom Color Matching				X
Fade & Scratch Resistance	X	X		X
Wide range of applications	X	X		X
ASTM requirements for safety	X	X	X	X
Antimicrobial properties			X	X
Pattern scaling to match project aesthetics				X
Varied product thicknesses				X
Seamless pattern tiling			X	X
Monolithic, Laminated or Insulated applications				X
Mirror Finish				X
Large Size (max is 88" x 126")		X		X
Required regular maintenance	X	X	X	X
Sensitivity to cleaning agents		X	X	X
Resonance & Soundproofing		X		X
Temperature Sensitivity			X	
Environmentally Responsible	X	X		X
Grout Lines	X			
Longevity	X	X		X

SHOWER WALLS

Why Decorative Glass Is the Future of Hard Surfaces.

The Emotional Truth

Not everyone wants to be a slave to grout. Or baby natural stone. Or settle for an environmentally harmful plastic shower. Decorative glass is no longer a niche, it's a trusted, proven material whose time has come. ADG is leading the charge to turn walls into canvases and surfaces into beautiful seamless design statements.

Ceramic frit printing is a high-performance imaging process that permanently fuses ceramic-based inks into tempered glass. This technique delivers exceptional durability and design freedom ideal for both interior and exterior applications. Unlike traditional silk-screening, it eliminates costly setup and storage fees while enabling limitless customization.

Key Advantages:

- Permanently bonded ceramic frit paint
 - Standard and custom color options
 - Ultra-high resolution up to 720 dpi
 - Adjustable opacity for layered effects
 - UV fade and scratch resistant
 - No screens, setup, or storage fees
 - Perfect for projects with unique, variable panels
 - Digital file storage for easy reprints
 - Compliant with ANSI Z97.1, CAN/CGSB, and CPSC 16 CFR 1201 safety glazing standards
- Please Note: CSI 3-Part Specifications available upon request

Precision Printing & Processing:

- Custom color matching for brand or material integration
- Reproduces fine lines, typography, photographs, and artwork
- Standard and custom fades, grids, gradients, and patterns
- Translucent opacity options ideal for backlighting and depth
- Seamless tiling across multi-pane installations
- Reference numbers printed for effortless alignment and reordering
- Compatible with cut-outs, holes, notches, and edgework

<u>Feature</u>	<u>Specification</u>
Minimum panel size	12" x 12"
Maximum panel size	110" x 177"
Monolithic thickness range	3/16" to 3/4"
Laminated options	PVB or SentryGlas™ interlayers
IGU configurations	Double/triple glazing up to 2-1/4"
Surface protection	Optional Enhance™ coating

Please Note: Max sizes may vary based on configuration and textured glass type.

Glass Specifications :

- Laminated glass: printed on surface #2
- IGUs: printed on surface #2 or #3 (surface #3 required if Low-E on #2)
- Bird-friendly glazing: printed on surface #1
- Compatible with low-iron, clear, satin etched, and most textured patterns

Applications:

Perfect for: Backsplashes • Doors • Handrails • Architectural Partitions - Partitions • Public art • Shower enclosures • Shower walls - Accent Walls - Wainscoting - Windows - Table Tops and more....

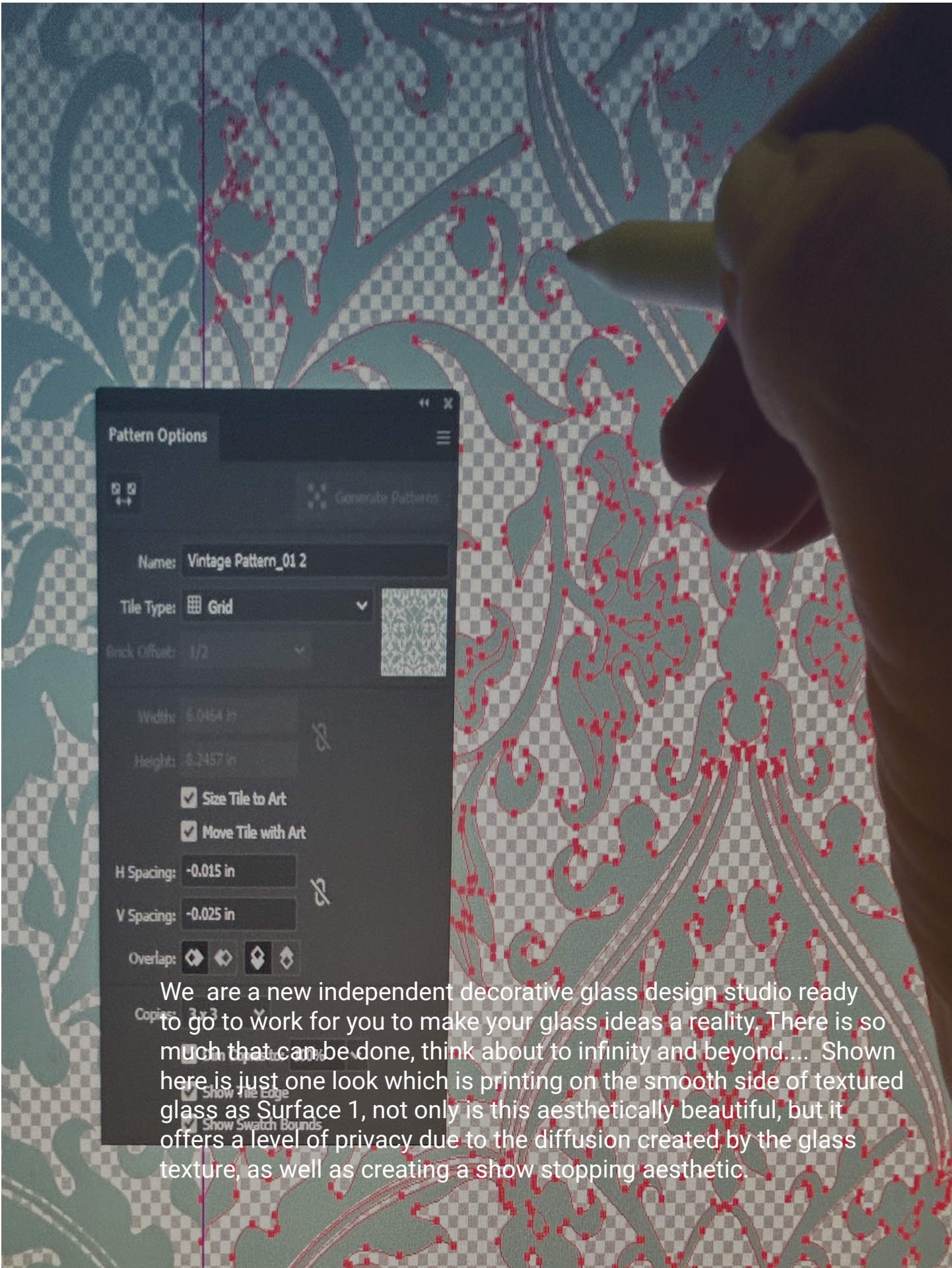


SHOWER GLASS

It Really Doesn't Have To Be a Clear Glass Box Anymore.

ADG | DESIGN STUDIO





Pattern Options

Generate Patterns

Name: **Vintage Pattern_01 2**

Tile Type: **Grid**

Brick Offset: 1/2

Width: 6.0454 in

Height: 8.2457 in

Size Tile to Art

Move Tile with Art

H Spacing: -0.015 in

V Spacing: -0.025 in

Overlap:

Copies: 3 x 3

Show Tile Edge

Show Swatch Bounds

We are a new independent decorative glass design studio ready to go to work for you to make your glass ideas a reality. There is so much that can be done, think about to infinity and beyond.... Shown here is just one look which is printing on the smooth side of textured glass as Surface 1, not only is this aesthetically beautiful, but it offers a level of privacy due to the diffusion created by the glass texture, as well as creating a show stopping aesthetic.

Let's join forces and show
the world just how cool
glass really is !



Office (VM): 1.386.264.9100
sales@archdecorglass.com
archdecorglass.com
Palm Coast - Tampa- West Palm
USA

